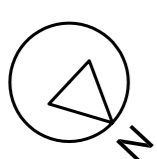
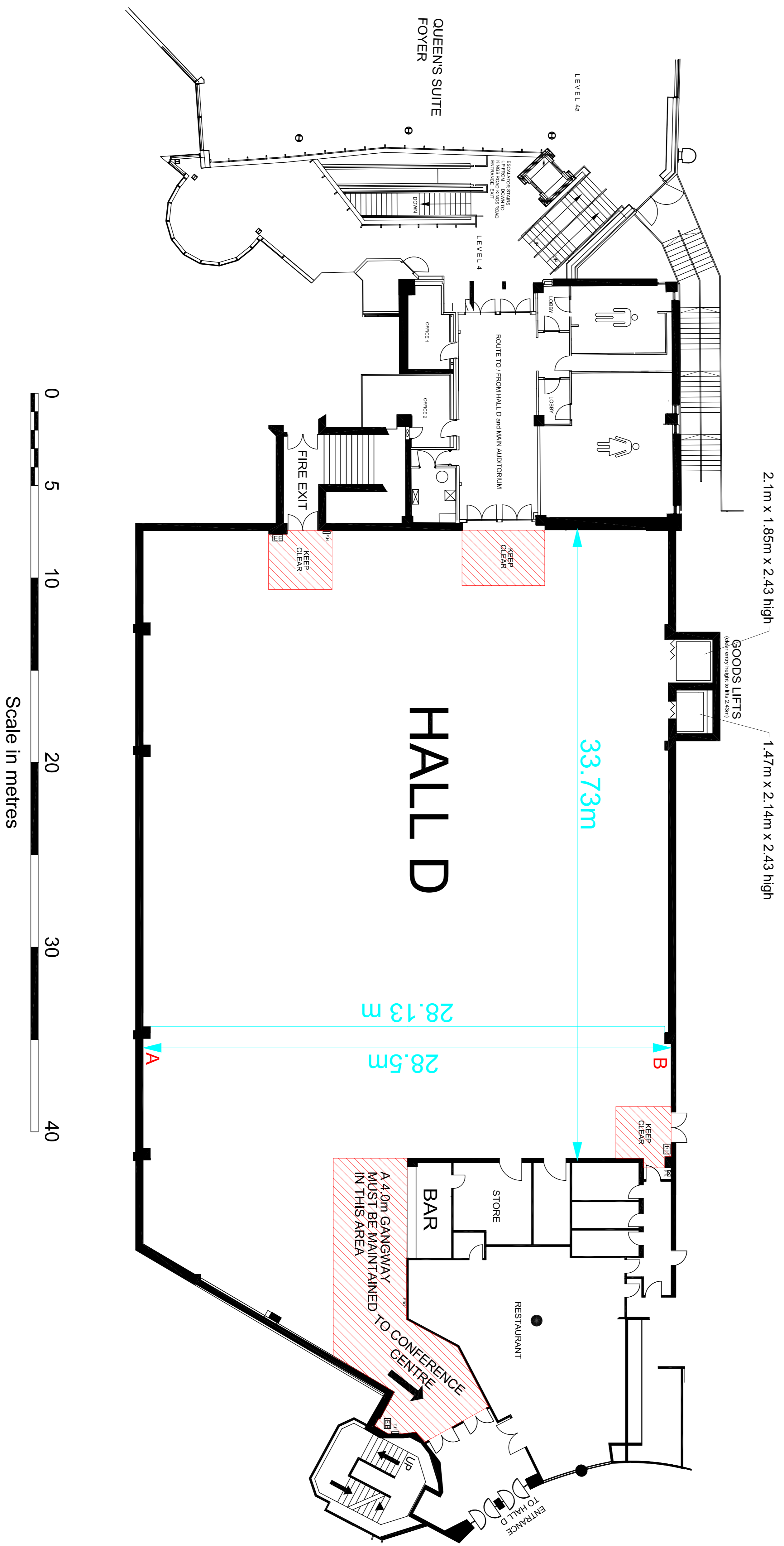


**CROSS SECTION THRO' HALL**

- 1 = Ceiling Truss with Fluorescent Light
- 2 = Heating / Ventilation Ducts
- 3 = Ladder Rack
- 4 = Pipe



Scale in metres

KEY	
☎	TELEPHONE
🔥	FIRE POINT
🚒	FIRE HOSE
📞	FIRE ALARM CALL POINT
⚡	ELECTRICAL ISOLATION SWITCH
🌀	CURTAIN
—	WALLING
—	POST
—	FASCIA
10	STAND NUMBER
(40)	STAND SIZE in sq.m.
■	PILLAR

ALL GANGWAYS OTHER THAN THOSE DEFINED MUST BE A MINIMUM OF 2.0 METRES. ALL GANGWAYS TO BE KEPT CLEAR AT ALL TIMES TO ALLOW WHEELCHAIR EGRESS.

THIS SET IS NOT FOR CONSTRUCTION. ONLY ALL DIMENSIONS AND BEHALF ARE FOR QUANTIFY ONLY, AND ADVISED TO BE KEPT UNDER REVIEW BY THE ARCHITECT. HARROGATE INTERNATIONAL CENTRE WILL NOT BE HELD RESPONSIBLE FOR ANY ERRORS OR OMISSIONS.

Title

**HALL D**

**PLAN & SECTION**

Dates  
January 2007

Dwg. Issue: D-1.00  
Drawn by: HIC CAD Office  
Tel: 01423 537371